

"LEADER IN ANIMAL CARE PRODUCTS FOR OVER 60 YEARS"



***SSCI***

***SUBURBAN SURGICAL Co., Inc.***

275 Twelfth Street, Wheeling, IL 60090

All intellectual material, including the text, graphics and other components of this catalog are Copyrighted by SSCI.  
Any use or duplication of these intellectual materials, without written consent by SSCI, is strictly forbidden.

# IMPERIAL/REGAL PREP-PROCEDURE/TREATMENT CENTERS

**COMBINE COMPONENTS TO CREATE A WORKSTATIONS  
DESIGNED TO MEET ALL YOUR NEEDS**



**To give** your work areas a fully-coordinated, professional appearance, simply combine a grouping of our Treatment and Prep-Procedure Tables into a highly-functional Prep-Procedure/Treatment Center.

There are a multitude of ways that you can create a Prep-Procedure/Treatment Center. Any Center you create is designed to be free-standing and accessible from three sides of each station, allowing it to be positioned anywhere in the room.

A single-station is a single Prep-Procedure or Treatment Table. For more flexibility create a two-station by abutting two tables together, or add a Base Cabinet between them to create more storage. You can even add a sink and faucet to the base cabinet.

Mount a Counter Top Chase above the base cabinet to conceal electric, water, oxygen and vacuum lines. You can attach an extra cabinet or cabinets, or mount diagnostic equipment and lights to the chase.

Or choose a Full-Height Chase to create a Center with one to four stations.

Then choose either Imperial laminated components or, for the ultimate in durability, choose our all-stainless steel Regal components.

Prep-Procedure/Treatment Centers can be configured with any the following components found within this catalog:

## **Prep-Procedure/Treatment Center**

Prep-Procedure Table(s)

Faucet and Drains

Treatment Table(s)

## **Countertop Chase Prep-Procedure/Treatment Center**

Prep-Procedure Table(s)

Faucet and Drains

Treatment Table(s)

Countertop Chase

Countertop

Base Cabinet

## **Full-Height Chase Prep-Procedure/Treatment Center**

Prep-Procedure Table(s)

Faucet and Drains

Treatment Table(s)

Full-height Chase

## Prep-Procedure/Treatment Centers

On this page and some of the following pages, there are ideas of how to configure Prep-Procedure/Treatment Centers using SSCI's Modular Cabinetry, Base Cabinetry, Counter Top Chase, Full-Height Chase and Prep-Procedure and Treatment Tables. Look over these ideas, if one does not suit your facility, then our design team will work with you to configure the perfect Prep-Procedure/Treatment Center for your facility.



## Counter Top Chase Prep Procedure/Treatment Centers



**In-Line-Arrangement, 1-Station**



**In-Line-Arrangement, 2-Station**

## Full-Height Chase Prep Procedure/Treatment Centers



**In-Line-Arrangement, 1-station**



**In-Line-Arrangement, 2-Station**



**L-Arrangement, 2station**



**T-Arrangement, 3-Station**



**+Arrangement, 4-Station**

## Imperial/Regal Chases

### IMPERIAL/REGAL COUNTER TOP CHASES ARE USED WITH IN-LINE AND CABINET ARRANGEMENT PREP-PROCEDURE/TREATMENT CENTERS:

Add a Countertop Chase to your In-line configured Prep-Procedure/Treatment Center or Cabinet Arrangement Prep-Procedure/Treatment Center for a convenient place to conceal electricity, oxygen, water and vacuum lines, making them readily available to each station within the Pre-Procedure/Treatment Center. Upper Cabinets can be mounted into an optional cabinet opening or surface-mounted to the Chase's exterior for even more flexibility and storage.

Counter Top Chases used with In-line Prep-Procedure/Treatment Centers require a Base Cabinet and counter top or Chases used with Cabinet Arrangements require SSCI's Modular Cabinetry (Section 18) to support the chase.

The Counter Top Chase consists of a column and adjustable collar, to accommodate various ceiling heights, and are shipped unassembled (four panels each) to reduce your shipping costs and for easier handling.

#### Collar

Available in 6 heights from 12-in. (30.48cm) to 54-in. (137.16cm) in 9-in. (22.86cm) increments to accommodate various height ceilings

#### Cabinet Opening

An Upper Cabinet Opening is optional in the Panel 1 for a recessed cabinet. Chase can be rotated to change cabinet location.

#### Column

57-in. high

Each of the four Panel's exterior and interior surfaces and edges are high-pressure plastic laminate.

Surface Mount:

- Diagnostic equipment
- Lights
- Cabinet
- Electrical outlet
- Oxygen supply
- Vacuum outlet



**New Product  
Check with SSCI  
for Picture**



**Imperial Laminated Counter  
Top Chase on Base Cabinet**

## IMPERIAL/REGAL COUNTER TOP CHASE FEATURE THESE CONSTRUCTION DETAILS AND MATERIALS:

**Imperial** Chase are constructed of industrial-grade substrate and are machined on a CNC machine for accuracy. Chase Panels are mechanically-fastened to ensure a solid, sturdy chase. This type of construction allows for panel removal for future utility additions.

All chase interiors are finished with Thermo-Fused Melamine, making them water, odor and chemical-resistant.

All finished, exterior surfaces including the chase's edges are laminated with high-pressure plastic laminate, available in SSCI Standard colors, or SSCI optional colors or choose from a spectrum of customer-selected colors to blend with your décor.

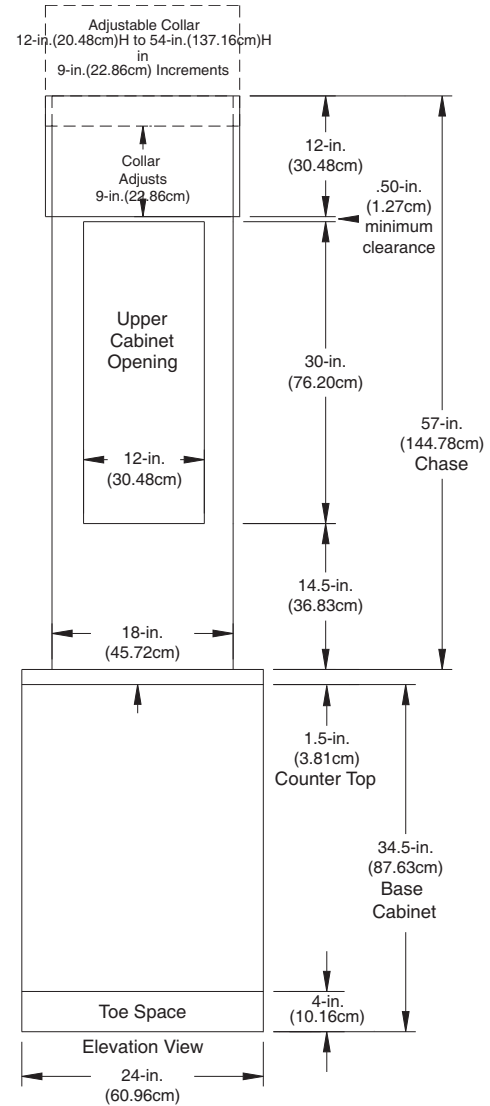
**Regal** Chase panels are constructed of die-formed stainless steel, and are formed on a CNC machine for accuracy. Panels are engineered for tight-fitting joints. Joints are mechanically-fastened to ensure a solid, sturdy chase. This type of construction allows for panel removal for future utility additions.

All chase interiors are stainless steel, making them impervious to water and absorption of odors.

All stainless steel exterior is durable and easy to clean, satin finish.

## Countertop Chase Configurations

Choose whether you want a plain column or a cabinet opening in one panel. Column can be rotated to change cabinet's location. Then, select the appropriate chase height for your facility's ceiling height. The collar will adjust from the low to high range of the Ceiling Height selected.



P/N IMPERIAL LAMINATED	P/N REGAL STAINLESS STEEL	WIDE	CEILING HEIGHTS LOW HIGH	DEEP
<b>Plain; four panels</b>				
HEAAAAAAAACTPRBF-___†	UEAAAAAAAACTPRBF	18-in. (45.72cm)	7-ft. 9-in. thru 8-ft. 6-in. (2.36m thru 2.59m)	8-in. (20.32cm)
HEAAAAAAAACTRBBF-___†	UEAAAAAAAACTRBBF	18-in. (45.72cm)	8-ft. 6-in. thru 9-ft. 3-in. (2.59m thru 2.82m)	8-in. (20.32cm)
HEAAAAAAAACTSLBF-___†	UEAAAAAAAACTSLBF	18-in. (45.72cm)	9-ft. 3-in. thru 10-ft 0-in. (2.82m thru 3.05m)	8-in. (20.32cm)
HEAAAAAAAACTTVBF-___†	UEAAAAAAAACTTVBF	18-in. (45.72cm)	10-ft 0-in. thru 10-ft 9-in. (3.05m thru 3.28m)	8-in. (20.32cm)
HEAAAAAAAACTVFBF-___†	UEAAAAAAAACTVFBF	18-in. (45.72cm)	10-ft 9-in. thru 11-ft 6-in. (3.28m thru 3.51m)	8-in. (20.32cm)
HEAAAAAAAACTWPBF-___†	UEAAAAAAAACTWPBF	18-in. (45.72cm)	11-ft 6-in. thru 12-ft 3-in. (3.51m thru 3.73m)	8-in. (20.32cm)
<b>Cabinet Opening; one panel</b>				
HEBAAAAAACPFBF-___†	UEBAAAAAACPFBF	18-in. (45.72cm)	7-ft. 9-in. thru 8-ft. 6-in. (2.36m thru 2.59m)	8-in. (20.32cm)
HEBAAAAAACPBBF-___†	UEBAAAAAACPBBF	18-in. (45.72cm)	8-ft. 6-in. thru 9-ft. 3-in. (2.59m thru 2.82m)	8-in. (20.32cm)
HEBAAAAAACPBBF-___†	UEBAAAAAACPBBF	18-in. (45.72cm)	9-ft. 3-in. thru 10-ft 0-in. (2.82m thru 3.05m)	8-in. (20.32cm)
HEBAAAAAACPBBF-___†	UEBAAAAAACPBBF	18-in. (45.72cm)	10-ft 0-in. thru 10-ft 9-in. (3.05m thru 3.28m)	8-in. (20.32cm)
HEBAAAAAACPBBF-___†	UEBAAAAAACPBBF	18-in. (45.72cm)	10-ft 9-in. thru 11-ft 6-in. (3.28m thru 3.51m)	8-in. (20.32cm)
HEBAAAAAACPBBF-___†	UEBAAAAAACPBBF	18-in. (45.72cm)	11-ft 6-in. thru 12-ft 3-in. (3.51m thru 3.73m)	8-in. (20.32cm)

**Important:** These customer order requirements, in addition to other customer order requirements, must be satisfied prior to the beginning of manufacturing lead time:

†Specify 4-digit Color code. See Color Selections, Section A, pages 1 & 2 for Color Codes.



SSCI laminated products are available in SSCI standard laminates, SSCI optional laminates, or Customer selected laminates.

**For Product Information Call TOLL-FREE 1-800-323-7366 • (847) 537-9320 • Fax (847) 537-9061**

**Hours: 8:30am - 5:00pm CST Monday - Friday**

Visit our website at: [www.suburbansurgical.com](http://www.suburbansurgical.com)

# Imperial/Regal Base Cabinets for Prep-Procedure/Treatment Centers

## IMPERIAL/REGAL CABINETRY FEATURES THESE HIGH-QUALITY CONSTRUCTION DETAILS AND MATERIALS:

**Imperial** Base and Upper Cabinet body panels are constructed of 45-lb. industrial-grade substrate, panels are machined on a CNC machine for accuracy. Panels are dadoed and rabbetted for tight-fitting joints. Joints are glued with adhesive impervious to liquids and mechanically-fastened to ensure a solid, sturdy cabinet.

All cabinet interiors are finished with Thermo-Fused Melamine, making them water, odor and chemical-resistant.

Drawer's steel sides feature integrated roller slides with baked-on, white epoxy finish. Drawer's back/bottom are .625-in. thick; open/close easily with 100 lb. load. 3D micro-adjustment ensures drawer alignment.

Door's positive-action, invisible hinges have self-closing mechanism, also holds door open. 3D micro-adjustment ensures door alignment.

Doors and drawer fronts have full width Aluminum Pulls.

All finished, exterior surfaces including the body's edges, drawer and cupboard door edges are laminated with high-pressure plastic laminate, available in SSCI Standard colors, or SSCI optional colors or choose from a spectrum of customer-selected colors to blend with your décor.

**Regal** Base and Upper Cabinet body panels are constructed of die-formed stainless steel, panels are formed on a CNC machine for accuracy. Panels are engineered for tight-fitting joints. Joints are welded and mechanically-fastened to ensure a solid, sturdy cabinet.

All cabinet interiors are stainless steel, making them impervious to water and absorbing odors.

Drawer's front is double-wall stainless steel construction with a full-width pull incorporated into the design. Welded, one-piece drawer body is stainless steel with roller telescoping slides allow drawers to fully open/close easily with 100 lb. load.

Doors are double-wall stainless steel construction with a full-width pull incorporated into the design and features positive-action invisible hinges which have self-closing mechanism, also holds door open. 3D micro-adjustment ensures door alignment.

Doors and drawer fronts have full width Stainless Steel Pulls.

All stainless steel exterior/interior is durable and easy to clean, satin finish.



### "D"-Style Drawer or False Front and 1 Door Hinged Left or Right

Cabinet with false front, no shelf to accommodate a sink.

**Width:** 24-in. (60.96cm) **Height:** 34.50-in.(87.63cm) **Depth:** 24-in. (60.96cm)

DOOR Hinged Left	DOOR Hinged Right	CABINET STYLE
<b>Imperial Laminated Cabinet; Drawer, 1 Adjustable Shelf</b>		
ARDPAEAHCDRFHDM - _ _ _ _ †	ARDQAEAHCDRFHDM - _ _ _ _ †	With Drawer
ARFPAAEAHCDRFHDM - _ _ _ _ †	ARFQAEAHCDRFHDM - _ _ _ _ †	With False Front
<b>Regal Stainless Steel Cabinet; Drawer, 1 Adjustable Shelf</b>		
NRDPAEAHCDRFHDM	NRDQAEAHCDRFHDM	With Drawer
NRFPAEAHCDRFHDM	NRFQAEAHCDRFHDM	With False Front

### "D"-Style Drawer or False Front and Pair of Doors

Cabinet with false front, no shelf to accommodate a sink.

**Width:** 24-in. (60.96cm) **Height:** 34.50-in.(87.63cm) **Depth:** 24-in. (60.96cm)

P/N	CABINET STYLE
<b>Imperial Laminated Cabinet; Drawer, 1 Adjustable Shelf</b>	
ARDSAEAHCDRFHDM - _ _ _ _ †	With Drawer
ARFSAEAHCDRFHDM - _ _ _ _ †	With False Front
<b>Regal Stainless Steel Cabinet; Drawer, 1 Adjustable Shelf</b>	
NRDSAEAHCDRFHDM	With Drawer
NRFSAEAHCDRFHDM	With False Front



**Important:** These customer order requirements, in addition to other customer order requirements, must be satisfied prior to the beginning of manufacturing lead time:

†Specify 4-digit Color code. See Color Selections, Section A, pages 1 & 2 for Color Codes.



SSCI laminated products are available in SSCI standard laminates, SSCI optional laminates, or Customer selected laminates.



# Imperial/Regal Base Cabinets for Prep-Procedure/Treatment Centers



## 1 Door Hinged Left or Right

Width: 24-in. (60.96cm) Height: 34.50-in. (87.63cm) Depth: 24-in. (60.96cm)

P/N	Hinged Left	Hinged Right
Imperial Laminated Cabinet; 1 Adjustable Shelf		
ARAPAEAHCDRFHDM - _ _ _ _ †		ARAOAEAHCDRFHDM - _ _ _ _ †
Regal Stainless Steel Cabinet; 1 Adjustable Shelf		
NRAPAEAHCDRFHDM		NRAOAEAHCDRFHDM

## Pair of Doors

Width: 24-in. (60.96cm) Height: 34.50-in. (87.63cm) Depth: 24-in. (60.96cm)

P/N
Imperial Laminated Cabinet; 1 Adjustable Shelf
ARAPAEAHCDRFHDM - _ _ _ _ †
Regal Stainless Steel Cabinet; 1 Adjustable Shelf
NRAPAEAHCDRFHDM



## 3 "F"-Style Drawers

Width: 24-in. (60.96cm) Height: 34.50-in. (87.63cm) Depth: 24-in. (60.96cm)

P/N
Imperial Laminated Cabinet
ARCBAEAHCDRFHDM - _ _ _ _ †
Regal Stainless Steel Cabinet
NRCBAEAHCDRFHDM

## 4 "D"-Style Drawers

Width: 24-in. (60.96cm) Height: 34.50-in. (87.63cm) Depth: 24-in. (60.96cm)

P/N
Imperial Laminated Cabinet
ARCOAEAHCDRFHDM - _ _ _ _ †
Regal Stainless Steel Cabinet
NRCOAEAHCDRFHDM



**Important:** These customer order requirements, in addition to other customer order requirements, must be satisfied prior to the beginning of manufacturing lead time:  
†Specify 4-digit Color code. See Color Selections, Section A, pages 1 & 2 for Color Codes.



SSCI laminated products are available in SSCI standard laminates, SSCI optional laminates, or Customer selected laminates.

# Countertops For Imperial/Regal Base Cabinets



Imperial Counter top for Base Cabinet

## Countertop

Countertop designed for use with base cabinets that fit between two stations in In-Line Prep-Procedure/Treatment Centers,. The surface and all four edges are finished with high-pressure plastic laminate. The adjoining tables' counter tops abut against the edges of the base cabinet counter top. A stainless steel counter top is offered to match the stainless steel tops of abutted tables.

P/N	DESCRIPTION	DIMENSIONS
<b>LAMINATED</b>		
FCAJHABDRAAAAEL- <sup>†</sup>	With Sink Cut-out	24-in. (60.6cm) W, 1.5-in. (3.81cm) T, 29.125-in.(73.98cm) D
FCAJHAADRAAAAEL- <sup>†</sup>	Without Sink Cut-out	24-in. (60.6cm) W, 1.5-in. (3.81cm) T, 29.125-in.(73.98cm) D
<b>STAINLESS STEEL</b>		
SCAJHABDRAAAAEL	With Cut-out for sink	24-in. (60.6cm) W, 1.5-in. (3.81cm) T, 29.125-in.(73.98cm) D
SCAJHAADRAAAAEL	Without Sink Cut-out	24-in. (60.6cm) W, 1.5-in. (3.81cm) T, 29.125-in.(73.98cm) D



Imperial Counter top for Base Cabinet with Sink, Faucet and Drain

## Stainless Steel Sink

Sink package includes sink, faucet and drain. Sized to fit the cutout in the counter top above.

P/N	DESCRIPTION
13337-00-CPAXBZ	Stainless Steel Sink, Faucet and Drain

**Important:** These customer order requirements, in addition to other customer order requirements, must be satisfied prior to the beginning of manufacturing lead time:  
<sup>†</sup>Specify 4-digit Color code. See Color Selections, Section A, pages 1 & 2 for Color Codes.



SSCI laminated products are available in SSCI standard laminates, SSCI optional laminates, or Customer selected laminates.



# Imperial/Regal Upper Cabinets for Countertop Chase

**One** Upper cabinet can be mounted by sliding into Chase's ordered with an opening for a cabinet or, if two cabinets are preferred, one or both must be surface-mounted to the chase.

Surface-mounted cabinets require an End Panel for both sides to finish Upper Cabinet's exterior (see below).



## Open

Open Cupboard with white interior.

**Width:** 12-in. (30.48cm) **Height:** 30-in. (76.20cm) **Depth:** 7.375-in. (18.73cm)

P/N

**Imperial Laminated Cabinet; 2 Adjustable Shelves**

AAAAAAAABVEPBD - \_\_\_\_†

**Regal Stainless Steel Cabinet; 2 Adjustable Shelves**

NAAAAAAAABVEPBD

## 1 Door Hinged Left or Right

**Width:** 12-in. (30.48cm) **Height:** 30-in. (76.20cm) **Depth:** 8-in. (20.32cm)

P/N

**Hinged Left**

**Hinged Right**

**Imperial Laminated Cabinet; 2 Adjustable Shelves**

AAANAEACBVEPBF - \_\_\_\_†      AAQAEACBVEPBF - \_\_\_\_†

**Regal Stainless Steel Cabinet; 2 Adjustable Shelves**

NAANAEACBVEPBF      NAAQAEACBVEPBF



## End Panels

Finishes exposed ends of Upper Cabinets when surface-mounted to chase.

P/N	Thickness	SIZE Height	Depth
<b>Imperial Laminated</b>			
DAOKAEAAAACEPBD - ____†	.625 in. (1.59cm)	30 in. (76.20cm)	7.375 in. (18.73cm)
DAOKAEAAAACEPBF - ____†	.625 in. (1.59cm)	30 in. (76.20cm)	8 in. (20.32cm)
<b>Regal Stainless Steel</b>			
QAOKAEAAAACEPBD	.625 in. (1.59cm)	30 in. (76.20cm)	8 in. (20.32cm)
QAOKAEAAAACEPBF	.625 in. (1.59cm)	30 in. (76.20cm)	8 in. (20.32cm)

**Important:** These customer order requirements, in addition to other customer order requirements, must be satisfied prior to the beginning of manufacturing lead time:

†Specify 4-digit Color code. See Color Selections, Section A, pages 1 & 2 for Color Codes.



SSCI laminated products are available in SSCI standard laminates, SSCI optional laminates, or Customer selected laminates.

**For Product Information Call TOLL-FREE 1-800-323-7366 • (847) 537-9320 • Fax (847) 537-9061**

**Hours: 8:30am - 5:00pm CST Monday - Friday**

Visit our website at: [www.suburbansurgical.com](http://www.suburbansurgical.com)

Prep-Procedure/  
Treatment Centers

In-Line Style, 1-Station Prep-Procedure/Treatment Center

7-ft. 1.625-in. (2.17m) W, 3-ft. .875-in.(.94m) H, 2-ft. 1-in. (.64m) D



Imperial Prep-Procedure/Treatment Center Components

P/N	DESCRIPTION	COLOR CABINET	TOP
<b>Imperial 6 Recessed-End Prep-Procedure Table</b> knee space, 3 drawers, 1 door hinged right			
L10AA04B1U0E0AS		-_-_-†	
<b>Imperial Base Cabinet,</b> 1 door hinged right			
ARAOEAHCDFHDM		-_-_-†	
<b>Imperial End Panel</b> DROKAEADAACFHDP			
		-_-_-†	
<b>Imperial Counter Top without cutout for sink</b> FCAJHAADYAAAEL			
			-_-_-†
<b>Faucet</b> 024601-E-Z-ZZ-V084-E*			
<b>Drain</b> 024647-Z-Z-ZZ-ZZZZ-Z*			
*Faucet and Drain shown, sold separately, see Section 18 for selection.			

Regal Prep-Procedure/Treatment Center Components

P/N	DESCRIPTION	COLOR CABINET	TOP
<b>Regal 6 Recessed-End Prep-Procedure Table</b> knee space, 3 drawers, 1 door hinged right			
Y10AA04B1U0E0AS		-_-_-†	
<b>Regal Base Cabinet,</b> 1 door hinged right			
NRAOEAHCDFHDM		-_-_-†	
<b>Regal End Panel</b> QROKAEADAACFHDP			
		-_-_-†	
<b>Regal Counter Top without cutout for sink</b> SCAJHAADYAAAEL			
			-_-_-†
<b>Faucet</b> 024601-E-Z-ZZ-V084-E*			
<b>Drain</b> 024647-Z-Z-ZZ-ZZZZ-Z*			
*Faucet and Drain shown, sold separately, see Section 18 for selection.			

**Important:** These customer order requirements, in addition to other customer order requirements, must be satisfied prior to the beginning of manufacturing lead time:  
†Specify 4-digit Color code. See Color Selections, Section A, pages 1 & 2 for Color Codes.



SSCI laminated products are available in SSCI standard laminates, SSCI optional laminates, or Customer selected laminates.

## In-Line Style, 2-Station Prep-Procedure/Treatment Center

10-ft. 2.625-in. (3.11m) W, 3-ft. .875-in. (.94m) H, 2-ft. 5.125-in. (.74m) D



### Imperial Prep-Procedure/Treatment Center Components

P/N	DESCRIPTION	COLOR CABINET	TOP
<b>Imperial 6 Recessed-End Prep-Procedure Table</b> knee space, 3 drawers, 1 door hinged right			
L10AA04B1U0E0A5		- - - - †	
<b>Imperial Recessed-End Treatment Table</b> 1 door hinged left, 4 drawers, knee space			
L60HG01D0V0B1A5	Laminated Abutted Top	- - - - †	- - - - †
<b>Faucet</b> 024601-E-Z-ZZ-V084-E*			
<b>Drain</b> 024647-Z-Z-ZZ-ZZZZ-Z*			

\*Faucet and Drain shown, sold separately, see Section 18 for selection.

### Regal Prep-Procedure/Treatment Center Components

P/N	DESCRIPTION	COLOR CABINET	TOP
<b>Regal 6 Recessed-End Prep-Procedure Table</b> knee space, 3 drawers, 1 door hinged right			
Y10AA04B1U0E0A5			
<b>Regal Recessed-End Treatment Table</b> 1 door hinged left, 4 drawers, knee space			
Y60HA01D0V0B1A5	Stainless Steel Abutted Top		
<b>Faucet</b> 024601-E-Z-ZZ-V084-E*			
<b>Drain</b> 024647-Z-Z-ZZ-ZZZZ-Z*			

\*Faucet and Drain shown, sold separately, see Section 18 for selection.

**Important:** These customer order requirements, in addition to other customer order requirements, must be satisfied prior to the beginning of manufacturing lead time:

†Specify 4-digit Color code. See Color Selections, Section A, pages 1 & 2 for Color Codes.



SSCI laminated products are available in SSCI standard laminates, SSCI optional laminates, or Customer selected laminates.

**For Product Information Call TOLL-FREE 1-800-323-7366 • (847) 537-9320 • Fax (847) 537-9061**

**Hours: 8:30am - 5:00pm CST Monday - Friday**

Visit our website at: [www.suburbansurgical.com](http://www.suburbansurgical.com)

In-Line Style, 2-Station Prep-Procedure/Treatment Center

12-ft. 5.25-in. (3.79m) W, 3-ft. .875-in.(.94m) H, 2-ft. 5.125-in. (.74m) D



Imperial Prep-Procedure/Treatment Center Components

P/N	DESCRIPTION	CABINET	COLOR TOP
<b>Imperial 6 Recessed-End Prep-Procedure Table</b>			
knee space, 4 drawers, 1 door hinged right			
L10HH04B1V0E0A5		- _ _ _ _ †	- _ _ _ _ †
<b>Imperial Base Cabinet,</b>			
1 door hinged right			
ARAOAEAHCDRFHDM		- _ _ _ _ †	
<b>Imperial Recessed-End Treatment Table</b>			
1 door hinged left, 4 drawers, knee space			
L60HG01DOV0B1A5	Laminated Abutted Top	- _ _ _ _ †	- _ _ _ _ †
<b>Imperial Counter Top without cutout for sink</b>			
FCAJHAADRAAAEL			_ _ _ †
<b>Faucet</b>			
024601-E-Z-ZZ-V084-E*			
<b>Drain</b>			
024647-Z-Z-ZZ-ZZZZ-Z*			
*Faucet and Drain shown, sold separately, see Section 18 for selection.			

Regal Prep-Procedure/Treatment Center Components

P/N	DESCRIPTION	COLOR	TOP
<b>Regal 6 Recessed-End Prep-Procedure Table</b>			
	knee space, 4 drawers, 1 door hinged right		
Y10HH04B1V0E0A5			
<b>Regal Base Cabinet,</b>			
	1 door hinged right		
NRAOAEAHCDRFHDM			
<b>Regal Recessed-End Treatment Table</b>			
	1 door hinged left, 4 drawers, knee space		
Y60HA01D0V0B1A5	Stainless Steel Abutted Top		
<b>Regal Counter Top without cutout for sink</b>			
SCAJHAADRAAAEL			
<b>Faucet</b>			
024601-E-Z-ZZ-V084-E*			
<b>Drain</b>			
024647-Z-Z-ZZ-ZZZZ-Z*			
<i>*Faucet and Drain shown, sold separately, see Section 18 for selection.</i>			

**Important:** These customer order requirements, in addition to other customer order requirements, must be satisfied prior to the beginning of manufacturing lead time:

†Specify 4-digit Color code. See Color Selections, Section A, pages 1 & 2 for Color Codes.



SSCI laminated products are available in SSCI standard laminates, SSCI optional laminates, or Customer selected laminates.

## In-Line Style, 2-Station Prep-Procedure/Treatment Center

12-ft. 5.25-in. (3.79m) W, 8-ft. 6-in.(2.59m) H, 2-ft. 5.125-in. (.74m) D



### Imperial Prep-Procedure/Treatment Center Components

P/N	DESCRIPTION	COLOR CABINET	TOP
<b>Imperial 6 Recessed-End Prep-Procedure Table</b>			
	knee space, 4 drawers, 1 door hinged right		
L10HH04B1V0E0A5		- - - - †	- - - - †
<b>Imperial Base Cabinet,</b>			
	1 door hinged right		
ARAOAEAHCDRFHDM		- - - - †	
<b>Imperial Recessed-End Treatment Table</b>			
	1 door hinged left, 4 drawers, knee space		
L60HC01D0V0B1A5	Laminated Abutted Top	- - - - †	- - - - †
<b>Imperial Counter Top without cutout for sink</b>			
FCAJHAADRAAAEL			- - - - †
<b>Imperial Upper Cabinet</b>			
	30-in. (76.20cm) open		
AAAAAAAABVEPBD		- - - - †	
<b>Imperial Counter Top Chase with cabinet cutout</b>			
HEBAAAAACTPRBF		- - - - †	
<b>Faucet</b>			
024601-E-Z-ZZ-V084-E*			
<b>Drain</b>			
024647-Z-Z-ZZ-ZZZZ-Z*			

\*Faucet and Drain shown, sold separately, see Section 18 for selection.

### Regal Prep-Procedure/Treatment Center Components

P/N	DESCRIPTION	COLOR CABINET	TOP
<b>Regal 6 Recessed-End Prep-Procedure Table</b>			
	knee space, 4 drawers, 1 door hinged right		
Y10HH04B1V0E0A5			
<b>Regal Base Cabinet,</b>			
	1 door hinged right		
NRAOAEAHCDRFHDM			
<b>Regal Recessed-End Treatment Table</b>			
	1 door hinged left, 4 drawers, knee space		
Y60HA01D0V0B1A5	Stainless Steel Abutted Top		
<b>Regal Counter Top without Cutout for Sink</b>			
SCAJHAADRAAAEL			
<b>Regal Upper Cabinet</b>			
	30-in. (76.20cm) open		
NAAAAAAAABVEPBD			
<b>Regal Counter Top Chase with Cabinet Cutout</b>			
UEBAAAAACTPRBF			
<b>Faucet</b>			
024601-E-Z-ZZ-V084-E*			
<b>Drain</b>			
024647-Z-Z-ZZ-ZZZZ-Z*			

\*Faucet and Drain shown, sold separately, see Section 18 for selection.

**Important:** These customer order requirements, in addition to other customer order requirements, must be satisfied prior to the beginning of manufacturing lead time:

†Specify 4-digit Color code. See Color Selections, Section A, pages 1 & 2 for Color Codes.



SSCI laminated products are available in SSCI standard laminates, SSCI optional laminates, or Customer selected laminates.

**For Product Information Call TOLL-FREE 1-800-323-7366 • (847) 537-9320 • Fax (847) 537-9061**

**Hours: 8:30am - 5:00pm CST Monday - Friday**

Visit our website at: [www.suburbansurgical.com](http://www.suburbansurgical.com)

## Laminated/Stainless Steel Chases

### IMPERIAL/REGAL FULL-HEIGHT CHASES ARE USED WITH IN-LINE L, T OR + PREP-PROCEDURE/TREATMENT CENTERS:

A Full-height Chase allows you to create an In-line, L, T or + configured Prep-Procedure/Treatment Center for a convenient place to conceal electricity, oxygen, water and vacuum lines, making them readily available to each station within the Pre-Procedure/Treatment Center. Lower and Upper Cabinets can be mounted into optional cabinet openings or upper cabinets can be surface-mounted to the Chase's exterior for even more flexibility and storage.

The Full-Height Chase consists of a column and adjustable collar, to accommodate various ceiling heights, and are shipped unassembled (four panels each) to reduce your shipping costs and for easier handling.

#### Column

93-in. high

Each of the four Panel's exterior and interior surfaces and edges are finished with high-pressure laminate.

Surface-Mount:

- Diagnostic equipment
- Lights
- Cabinet
- Electrical outlet
- Oxygen supply
- Vacuum outlet

#### Collar

Available in 6 heights from 12-in. (30.48cm) to 54-in. (137.16cm) in 9-in. (22.86cm) increments to accommodate various height ceilings

#### Cabinet Openings

Lower and Upper Cabinet Openings are optional in various combinations for recessed cabinets.



Imperial Laminated Full-Height Chase



**New Product  
Check with SSCI  
for Picture**

**Regal Stainless Steel  
Full-Height Chase**



# How to Order Imperial/Regal Full-Height Chase

## IMPERIAL/REGAL FULL-HEIGHT CHASE FEATURE THESE CONSTRUCTION DETAILS AND MATERIALS:

**Imperial** Chase are constructed of industrial-grade substrate and are machined on a CNC machine for accuracy. Chase Panels are mechanically-fastened to ensure a solid, sturdy chase. This type of construction allows for panel removal for future utility additions.

All chase interiors are finished with Thermo-Fused Melamine, making them water, odor and chemical-resistant.

All finished, exterior surfaces including the chase's edges are laminated with high-pressure plastic laminate, available in SSCI Standard colors, or SSCI optional colors or choose from a spectrum of customer-selected colors to blend with your décor.

**Regal** Chase panels are constructed of die-formed stainless steel, and are formed on a CNC machine for accuracy. Panels are engineered for tight-fitting joints. Joints are mechanically-fastened to ensure a solid, sturdy chase. This type of construction allows for panel removal for future utility additions.

All chase interiors are stainless steel, making them impervious to water and absorption of odors.

All stainless steel exterior is durable and easy to clean, satin finish.

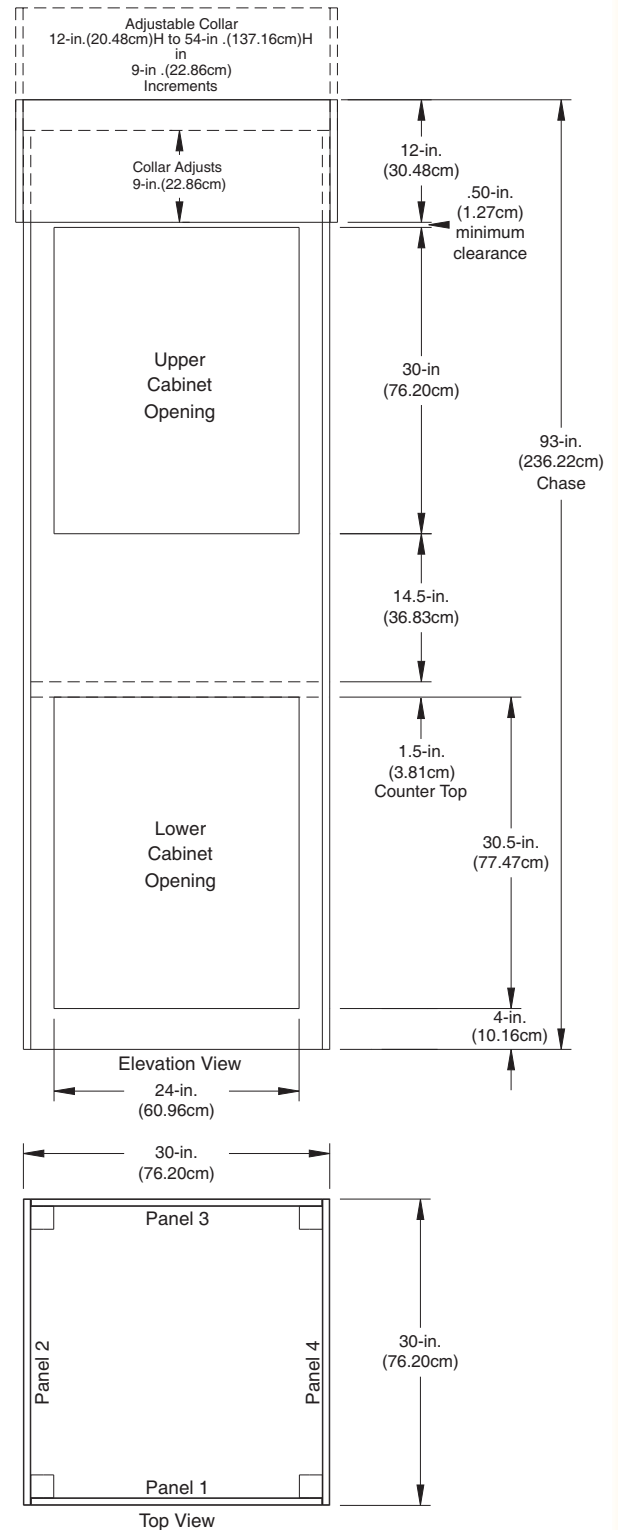
The Full-Height Chase stands on the floor and extends to the facility's ceiling. Use the chart on the next page to select the appropriate height chase. There are six heights available for ceiling heights from 7-ft. 9-in. (2.36m) thru 12-ft. 3-in. (3.73m)

Choose the type of material you want the chase to be; Imperial Laminated or Regal Stainless Steel.

The Chase is available with four panels plain; no cutouts for cabinets. Or, various cabinet cutout combinations can be specified. The following rules apply:

- 1) Only one panel of the chase can be cut out for a lower cabinet. You cannot place a table on the panel with a lower cabinet cutout.
- 2) The chase can be cut out for one upper cabinet on any panel. If two upper cabinet cutouts are preferred, they must be on opposing panels of the chase.
- 3) Upper cabinets can be surface-mounted on any panel in any combination; no cabinet cutouts are required.

'Panel One' is determined by where you will abut your first table. To decide where you will install cabinets in the chase, face 'Panel One'. The left panel is 'Panel Two', the back panel is 'Panel Three' and the right panel is 'Panel Four'.



# Configurations For Full-Height Chase Prep-Procedure/Treatment Centers

## USE OF PREP-PROCEDURE AND TREATMENT TABLES WITH THE FULL-HEIGHT CHASE

The illustrations below show the possible configurations using a Full-Height Chase. Panel One is identified in each drawing.

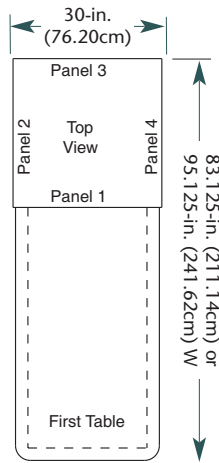
The solid line for each table depicts a Prep-Procedure Table with an abutted top or a Treatment Table, the dotted line depicts a Prep-Procedure Table with no top.

The dimensions included with the illustrations define the width and depth of each configuration using the Full-Height

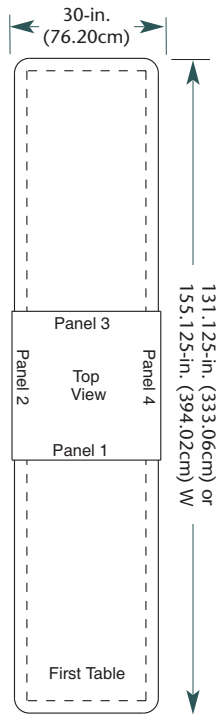
Chase. The small dimension is based on the use of: 48-in. (121.92cm) table(s) with abutted top.

The larger dimension is based on the use of: 60-in. (152.40cm) table(s) with abutted top.

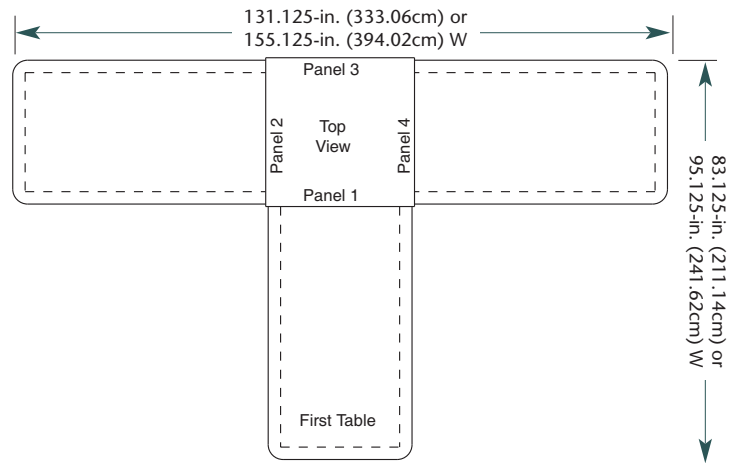
If you plan to use one 48-in. (121.92cm) table with abutted top instead of one 60-in. (152.40cm) table with abutted top, simply subtract 12-in. (30.48cm) from the larger W dimension.



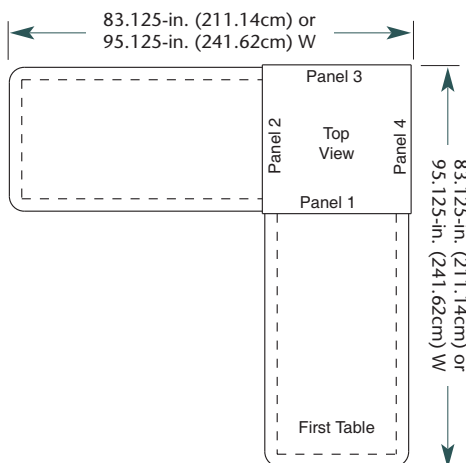
**In-Line, 1-Station**



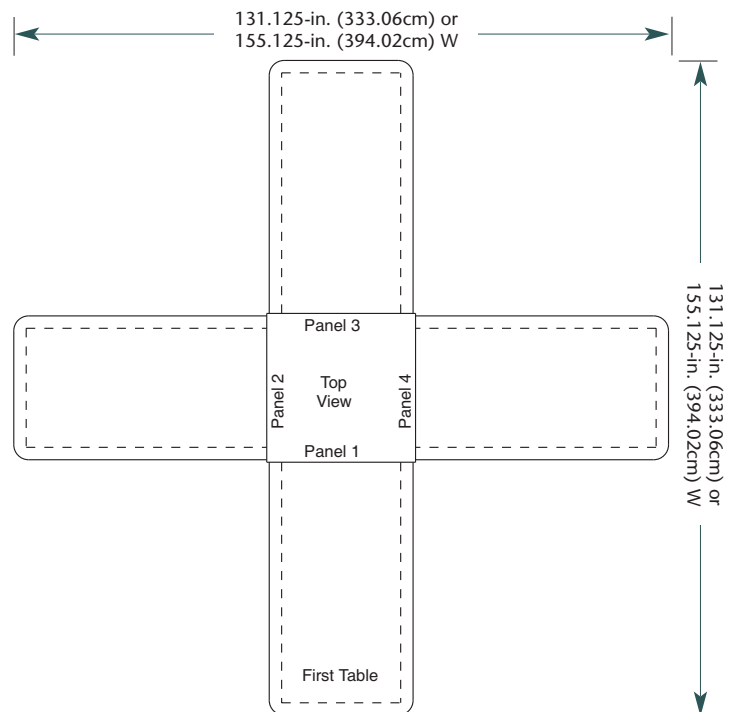
**In-Line, 2-Station**



**T, 3-Station**



**L, 2-Station**



**+, 4-Station**

# Cabinet Cutouts Locations For Imperial/Regal Full-Height Chase

**TO COMPLETE THE FULL-HEIGHT CHASE SPECIFICATIONS,  
CHOOSE CHASE HEIGHT AND CABINET CUTOUT LOCATIONS:**

## Full-Height Chase

Select the appropriate chase height for your facility's ceiling height.  
The collar will adjust from the low to high range of the Ceiling Height selected.

P/N IMPERIAL LAMINATED	P/N REGAL STAINLESS STEEL	WIDE	CEILING HEIGHTS LOW	HIGH	DEEP
HF ♦♦♦♦ AAAEPPREP-__-__†	UF ♦♦♦♦ AAAEPPREP	30-in. (76.20cm)	7-ft. 9-in. thru 8-ft. 6-in.	(2.36m thru 2.59m)	30-in. (76.20cm)
HF ♦♦♦♦ AAAEPRBEP-__-__†	UF ♦♦♦♦ AAAEPRBEP	30-in. (76.20cm)	8-ft. 6-in. thru 9-ft. 3-in.	(2.59m thru 2.82m)	30-in. (76.20cm)
HF ♦♦♦♦ AAAEPSLEP-__-__†	UF ♦♦♦♦ AAAEPSLEP	30-in. (76.20cm)	9-ft. 3-in. thru 10-ft 0-in.	(2.82m thru 3.05m)	30-in. (76.20cm)
HF ♦♦♦♦ AAAEPTVEP-__-__†	UF ♦♦♦♦ AAAEPTVEP	30-in. (76.20cm)	10-ft 0-in. thru 10-ft 9-in.	(3.05m thru 3.28m)	30-in. (76.20cm)
HF ♦♦♦♦ AAAEPVFEP-__-__†	UF ♦♦♦♦ AAAEPVFEP	30-in. (76.20cm)	10-ft 9-in. thru 11-ft 6-in.	(3.28m thru 3.51m)	30-in. (76.20cm)
HF ♦♦♦♦ AAAEPWPEP-__-__†	UF ♦♦♦♦ AAAEPWPEP	30-in. (76.20cm)	11-ft 6-in. thru 12-ft 3-in.	(3.51m thru 3.73m)	30-in. (76.20cm)

## Cabinet Cutout Location Code

Refer to the drawings on the opposite page to determine which panel, *Panel One* is.

The Chase is available with four panels no cutouts for cabinets. Or, various cabinet cutout combinations can be specified. *The following rules apply:*

- 1) Only one panel can be cut out for a lower cabinet. You cannot place a table on the panel with a lower cabinet cutout.
- 2) One upper cabinet cutout can be in any panel. If two upper cabinet cutouts are preferred, they must be on opposing panels.
- 3) Upper cabinets can be surface-mounted on any panel in any combination; no cabinet cutouts are required.

*Specify a Location Code for all four panels of the chase; Panel One, position 4, Panel Two, position 5, Panel Three, position 6 and Panel Four, position 7.*

LOCATION CODE	LOCATIONS
<b>Panel One; first table is abutted to</b>	
P/N Digit 3	
A	None
B	Cabinet Cut-Out Upper Section*
C	Option not available; location of first table
D	Option not available; location of first table
<b>Panel Two</b>	
P/N Digit 4	
A	None
B	Cabinet Cut-Out Upper Section*
C	Cabinet Cut-Out Lower Section**
D	Cabinet Cut-Out Upper & Lower Sections**
<b>Panel Three</b>	
P/N Digit 5	
A	None
B	Cabinet Cut-Out Upper Section*
C	Cabinet Cut-Out Lower Section**
D	Cabinet Cut-Out Upper & Lower Sections**
<b>Panel Four</b>	
P/N Digit 6	
A	None
B	Cabinet Cut-Out Upper Section*
C	Cabinet Cut-Out Lower Section**
D	Cabinet Cut-Out Upper & Lower Sections**

\* Upper cabinets may be located on one or both opposing panels.

\*\* Lower cabinet located only on one panel.



SSCI laminated products are available in SSCI standard laminates, SSCI optional laminates, or Customer selected laminates.

**Important:** The following customer requirements, in addition to other customer requirements, must be satisfied prior to the beginning of manufacturing lead time:

♦Specify 4-digit Cabinet Cut-out Location code. See Chart above for Location Codes.

†Specify 4-digit Color code. See Color Selections, Section A, pages 1 & 2 for Color Codes.

**For Product Information Call TOLL-FREE 1-800-323-7366 • (847) 537-9320 • Fax (847) 537-9061**

**Hours: 8:30am - 5:00pm CST Monday - Friday**

Visit our website at: [www.suburbansurgical.com](http://www.suburbansurgical.com)

# Imperial/Regal Lower Cabinets for Full-Height Chase

## IMPERIAL/REGAL CABINETRY FEATURES THESE HIGH-QUALITY CONSTRUCTION DETAILS AND MATERIALS:

**Imperial** Lower and Upper Cabinet body panels are constructed of 45-lb. industrial-grade substrate, panels are machined on a CNC machine for accuracy. Panels are dadoed and rabbetted for tight-fitting joints. Joints are glued with adhesive impervious to liquids and mechanically-fastened to ensure a solid, sturdy cabinet.

All cabinet interiors are finished with Thermo-Fused Melamine, making them water, odor and chemical-resistant.

Drawer's steel sides feature integrated roller slides with baked-on, white epoxy finish. Drawer's back/bottom are .625-in. thick; open/close easily with 100 lb. load. 3D micro-adjustment ensures drawer alignment.

Door's positive-action, invisible hinges have self-closing mechanism, also holds door open. 3D micro-adjustment ensures door alignment.

Doors and drawer fronts have full width Aluminum Pulls.

All finished, exterior surfaces including the body's edges, drawer and cupboard door edges are laminated with high-pressure plastic laminate, available in SSCI Standard colors, or SSCI optional colors or choose from a spectrum of customer-selected colors to blend with your décor.

**Regal** Lower and Upper Cabinet body panels are constructed of die-formed stainless steel, panels are formed on a CNC machine for accuracy. Panels are engineered for tight-fitting joints. Joints are welded and mechanically-fastened to ensure a solid, sturdy cabinet.

All cabinet interiors are stainless steel, making them impervious to water and absorbing odors.

Drawer's front is double-wall stainless steel construction with a full-width pull incorporated into the design. Welded, one-piece drawer body is stainless steel with roller telescoping slides allow drawers to fully open/close easily with 100 lb. load.

Doors are double-wall stainless steel construction with a full-width pull incorporated into the design and features positive-action invisible hinges which have self-closing mechanism, also holds door open. 3D micro-adjustment ensures door alignment.

Doors and drawer fronts have full width Stainless Steel Pulls.

All stainless steel exterior/interior is durable and easy to clean, satin finish.



### "D"-Style Drawer and 1 Door Hinged Left or Right

Width: 24-in. (60.96cm) Height: 34.50-in.(87.63cm) Depth: 24-in. (60.96cm)

P/N	Hinged Left	Hinged Right
Imperial Laminated Cabinet; 1 Adjustable Shelf		
ARDPAEAACDRFHDR - _ _ _ †		
Regal Stainless Steel Cabinet; 1 Adjustable Shelf		
NRDPAEAACDRFHDR		

### "D"-Style Drawer and Pair of Doors

Width: 24-in. (60.96cm) Height: 34.50-in.(87.63cm) Depth: 24-in. (60.96cm)

P/N
Imperial Laminated Cabinet; 1 Adjustable Shelf
ARDSAEAACDRFHDR - _ _ _ †
Regal Stainless Steel Cabinet; 1 Adjustable Shelf
NRDSAEAACDRFHDR



**Important:** These customer order requirements, in addition to other customer order requirements, must be satisfied prior to the beginning of manufacturing lead time:

†Specify 4-digit Color code. See Color Selections, Section A, pages 1 & 2 for Color Codes.



SSCI laminated products are available in SSCI standard laminates, SSCI optional laminates, or Customer selected laminates.

# Imperial/Regal Lower Cabinets for Full-Height Chase



## 1 Door Hinged Left or Right

Width: 24-in. (60.96cm) Height: 34.50-in. (87.63cm) Depth: 24-in. (60.96cm)

P/N	Hinged Left	Hinged Right
<b>Imperial Laminated Cabinet; 1 Adjustable Shelf</b>		
ARANAEACDRFHDR - _ _ _ _ †	ARAOAEACDRFHDR - _ _ _ _ †	
<b>Regal Stainless Steel Cabinet; 1 Adjustable Shelf</b>		
NRANAEACDRFHDR	NRAOAEACDRFHDR	

## Pair of Doors

Width: 24-in. (60.96cm) Height: 34.50-in. (87.63cm) Depth: 24-in. (60.96cm)

P/N
<b>Imperial Laminated Cabinet; 1 Adjustable Shelf</b>
ARAPAEACDRFHDR - _ _ _ _ †
<b>Regal Stainless Steel Cabinet; 1 Adjustable Shelf</b>
NRAPAEACDRFHDR



## 3 "F"-Style Drawers

Width: 24-in. (60.96cm) Height: 34.50-in. (87.63cm) Depth: 24-in. (60.96cm)

P/N
<b>Imperial Laminated Cabinet</b>
ARCBAEACDRFHDR - _ _ _ _ †
<b>Regal Stainless Steel Cabinet</b>
NRCBAEACDRFHDR

## 4 "D"-Style Drawers

Width: 24-in. (60.96cm) Height: 34.50-in. (87.63cm) Depth: 24-in. (60.96cm)

P/N
<b>Imperial Laminated Cabinet</b>
ARCOAEACDRFHDR - _ _ _ _ †
<b>Regal Stainless Steel Cabinet</b>
NRCOAEACDRFHDR



**Important:** These customer order requirements, in addition to other customer order requirements, must be satisfied prior to the beginning of manufacturing lead time:

†Specify 4-digit Color code. See Color Selections, Section A, pages 1 & 2 for Color Codes.



SSCI laminated products are available in SSCI standard laminates, SSCI optional laminates, or Customer selected laminates.

# Imperial/Regal Upper Cabinets for Full-Height Chase

## Open

Width: 24-in. (60.96cm) Height: 30-in. (76.20cm) Depth: 11.375-in. (28.89cm)

P/N
Imperial Laminated Cabinet; 2 Adjustable Shelves AAAAAAAADREPBT - _ _ _ †
Regal Stainless Steel Cabinet; 2 Adjustable Shelves NAAAAAAAADREPBT



## Pair of Acrylic Sliding Doors

Choose Clear or Tinted Acrylic sliding doors.

Width: 24-in. (60.96cm) Height: 30-in. (76.20cm) Depth: 11.375-in. (28.89cm)

P/N	Clear Glass doors	Tinted Acrylic doors
Imperial Laminated Cabinet		
AAABAGAAADREPBT - _ _ _ †		AAABAHAAADREPBT - _ _ _ †
Regal Stainless Steel Cabinet		
NAABAGAAADREPBT		NAABAHAAADREPBT

## 1 Door Hinged Left or Right

Width: 24-in. (60.96cm) Height: 30-in. (76.20cm) Depth: 12-in. (30.48cm)

P/N	Hinged Left	Hinged Right
Imperial Laminated Cabinet; 2 Adjustable Shelves		
AAANAEACDREPBT - _ _ _ †		AAAOAEACDREPBT - _ _ _ †
Regal Stainless Steel Cabinet; 2 Adjustable Shelves		
NAANAEACDREPBT		NAAOAEACDREPBT



## Pair of Doors

Width: 24-in. (60.96cm) Height: 30-in. (76.20cm) Depth: 12-in. (30.48cm)

P/N
Imperial Laminated Cabinet; 2 Adjustable Shelves AAAPAEACDREPBT - _ _ _ †
Regal Stainless Steel Cabinet; 2 Adjustable Shelves NAAPAEACDREPBT

## End Panels

Finishes exposed ends of Upper Cabinets when surface-mounted to chase.

P/N	Thickness	SIZE Height	Depth
Imperial Laminated			
DAOKAEAAAACEPBT - _ _ _ †	.625 in. (1.59cm)	30 in. (76.20cm)	11.375 in. (28.89cm)
DAOKAEAAAACEPBV - _ _ _ †	.625 in. (1.59cm)	30 in. (76.20cm)	12 in. (30.48cm)
Regal Stainless Steel			
QAOKAEAAAACEPBT	.625 in. (1.59cm)	30 in. (76.20cm)	11.375 in. (28.89cm)
QAOKAEAAAACEPBV	.625 in. (1.59cm)	30 in. (76.20cm)	12 in. (30.48cm)



**Important:** These customer order requirements, in addition to other customer order requirements, must be satisfied prior to the beginning of manufacturing lead time:

†Specify 4-digit Color code. See Color Selections, Section A, pages 1 & 2 for Color Codes.



## In-Line Style, 1-Station Prep-Procedure/Treatment Center

7-ft. 6-in. (2.29m) W, 8-ft. 6-in.(2.59m) H, 2-ft. 6-in. (.76m) D



### Imperial Prep-Procedure/Treatment Center Components

P/N	DESCRIPTION	LOCATION	COLOR CABINET TOP
<b>Imperial 6 Recessed-End Prep-Procedure Table</b>	1 door hinged left, 4 drawers, knee space	<b>Panel 1</b>	
L10AA03DOV0B1A5			-----†
<b>Imperial Lower Cabinet,</b>	1 door hinged left	<b>Panel 2</b>	
ARANAEACDRFHDR			-----†
<b>Imperial Upper Cabinet,</b>	open	<b>Panel 1</b>	
AAAAAAAAADREPBT			-----†
<b>Imperial Full-Height Chase, Cabinet Openings:</b>			
panel one upper, panel two lower			
HFBCAAAAEPPREP			-----†
<b>Faucet</b>			
024601-E-Z-ZZ-V084-E*			
<b>Drain</b>			
024647-Z-Z-ZZ-ZZZZ-Z*			

\*Faucet and Drain shown, sold separately, see Section 18 for selection.

### Regal Prep-Procedure/Treatment Center Components

P/N	DESCRIPTION	LOCATION	COLOR CABINET TOP
<b>Regal 6 Recessed-End Prep-Procedure Table</b>	1 door hinged left, 4 drawers, knee space	<b>Panel 1</b>	
Y10AA03DOV0B1A5			
<b>Regal Lower Cabinet,</b>	1 door hinged left	<b>Panel 2</b>	
NRANAEACDRFHDR			
<b>Regal Upper Cabinet,</b>	open	<b>Panel 1</b>	
NAAAAAAAAADREPBT			
<b>Regal Full-Height Chase, Cabinet Openings:</b>			
panel one upper, panel two lower			
UFBCAAAAEPPREP			
<b>Faucet</b>			
024601-E-Z-ZZ-V084-E*			
<b>Drain</b>			
024647-Z-Z-ZZ-ZZZZ-Z*			

\*Faucet and Drain shown, sold separately, see Section 18 for selection.

**Important:** These customer order requirements, in addition to other customer order requirements, must be satisfied prior to the beginning of manufacturing lead time:

†Specify 4-digit Color code. See Color Selections, Section A, pages 1 & 2 for Color Codes.



SSCI laminated products are available in SSCI standard laminates, SSCI optional laminates, or Customer selected laminates.

**For Product Information Call TOLL-FREE 1-800-323-7366 • (847) 537-9320 • Fax (847) 537-9061**

**Hours: 8:30am - 5:00pm CST Monday - Friday**

Visit our website at: [www.suburbansurgical.com](http://www.suburbansurgical.com)

Full-Height Prep-Procedure/  
Treatment Centers

In-Line Style, 2-Station Prep-Procedure/Treatment Center

12-ft. 8.625-in. (3.88m) W, 8-ft. 6-in.(2.59m) H, 2-ft. 6-in. (.76m) D



First Table

Imperial Prep-Procedure/Treatment Center Components

P/N	DESCRIPTION	LOCATION	COLOR CABINET	TOP
<b>Imperial 6 Recessed-End Prep-Procedure Table</b>	knee space, 3 drawers, 1 door hinged right	<b>Panel 1</b>		
L10AA04B1U0E0A5			- - - - †	
<b>Imperial Recessed-End Treatment Table</b>	1 door hinged left, 4 drawers, knee space	<b>Panel 3</b>		
L60HG01D0U0B1A5	Laminated Abutted Top		- - - - †	- - - - †
<b>Imperial Lower Cabinet,</b>	1 D-style drawer, 1 door hinged right	<b>Panel 4</b>		
ARDQAEACDRFHDR			- - - - †	
<b>Imperial Upper Cabinet,</b>	open	<b>Panel 4</b>		
AAAAAAAADREPBT			- - - - †	
<b>Imperial Full-Height Chase, Cabinet Openings:</b>	panel four lower, upper			
HFAAADAAAEPREP			- - - - †	
<b>Faucet</b>				
024601-E-Z-ZZ-V084-E*				
<b>Drain</b>				
024647-Z-Z-ZZ-ZZZZ-Z*				

\*Faucet and Drain shown, sold separately, see Section 18 for selection.

**Important:** These customer order requirements, in addition to other customer order requirements, must be satisfied prior to the beginning of manufacturing lead time:

†Specify 4-digit Color code. See Color Selections, Section A, pages 1 & 2 for Color Codes.

Regal Prep-Procedure/Treatment Center Components

P/N	DESCRIPTION	LOCATION	COLOR CABINET	TOP
<b>Regal 6 Recessed-End Prep-Procedure Table</b>	knee space, 3 drawers, 1 door hinged right	<b>Panel 1</b>		
Y10AA04B1U0E0A5				
<b>Regal Recessed-End Treatment Table</b>	1 door hinged left, 4 drawers, knee space	<b>Panel 3</b>		
Y60HA01D0U0B1A5	Stainless Steel Abutted Top			
<b>Regal Lower Cabinet,</b>	1 D-style drawer, 1 door hinged right	<b>Panel 4</b>		
NRDQAEACDRFHDR				
<b>Regal Upper Cabinet,</b>	open	<b>Panel 4</b>		
NAAAAAAAADREPBT				
<b>Regal Full-Height Chase, Cabinet Openings:</b>	panel four lower, upper			
UFAAADAAAEPREP				
<b>Faucet</b>				
024601-E-Z-ZZ-V084-E*				
<b>Drain</b>				
024647-Z-Z-ZZ-ZZZZ-Z*				

\*Faucet and Drain shown, sold separately, see Section 18 for selection.



SSCI laminated products are available in SSCI standard laminates, SSCI optional laminates, or Customer selected laminates.

## L Shape, 2-Station Prep-Procedure/Treatment Center

7-ft. 8.625-in. (2.35m) W, 8-ft. 6-in.(2.59m) H, 7-ft. 6-in. (2.29m) W D



### Imperial Prep-Procedure/Treatment Center Components

P/N	DESCRIPTION	LOCATION	COLOR CABINET	TOP
<b>Imperial Recessed End Treatment Table</b>				
	knee space, 4 drawers, 1 door hinged right	Panel 1		
L60HC01B1V0E0AS	Laminated Abutted Top		- - - - †	- - - - †
<b>Imperial 6 Recessed-End Prep-Procedure Table</b>				
	1 door hinged left, 4 drawers, knee Space,	Panel 4		
L10AA03D0V0B1AS			- - - - †	
<b>Imperial Upper Cabinet,</b>				
	open	Panel 4		
AAAAAAAADREPBT			- - - - †	
<b>Imperial Full-Height Chase, Cabinet Openings:</b>				
	panel four upper			
HFAAABAAAEPPREP			- - - - †	
<b>Faucet</b>				
024601-E-Z-ZZ-V084-E*				
<b>Drain</b>				
024647-Z-Z-ZZ-ZZZZ-Z*				
*Faucet and Drain shown, sold separately, see Section 18 for selection.				

### Regal Prep-Procedure/Treatment Center Components

P/N	DESCRIPTION	LOCATION	COLOR CABINET	TOP
<b>Regal Recessed End Treatment Table</b>				
	knee space, 4 drawers, 1 door hinged right	Panel 1		
Y60HA01B1V0E0AS	Stainless Steel Abutted Top			
<b>Regal 6 Recessed-End Prep-Procedure Table</b>				
	1 door hinged left, 4 drawers, knee Space,	Panel 4		
Y10AA03D0V0B1AS				
<b>Regal Upper Cabinet,</b>				
	open	Panel 4		
NAAAAAAAADREPBT				
<b>Regal Full-Height Chase, Cabinet Openings:</b>				
	panel four upper			
UFAAABAAAEPPREP				
<b>Faucet</b>				
024601-E-Z-ZZ-V084-E*				
<b>Drain</b>				
024647-Z-Z-ZZ-ZZZZ-Z*				
*Faucet and Drain shown, sold separately, see Section 18 for selection.				

**Important:** These customer order requirements, in addition to other customer order requirements, must be satisfied prior to the beginning of manufacturing lead time:

†Specify 4-digit Color code. See Color Selections, Section A, pages 1 & 2 for Color Codes.



SSCI laminated products are available in SSCI standard laminates, SSCI optional laminates, or Customer selected laminates.

**For Product Information Call TOLL-FREE 1-800-323-7366 • (847) 537-9320 • Fax (847) 537-9061**

**Hours: 8:30am - 5:00pm CST Monday - Friday**

Visit our website at: [www.suburbansurgical.com](http://www.suburbansurgical.com)

Full-Height Prep-Procedure/  
Treatment Centers

T Shape, 3-Station Prep-Procedure/Treatment Center  
12-ft. 6-in. (3.81m) W, 8-ft. 6-in.(2.59m) H, 7-ft. 8.625-in. (2.35m) W D



Imperial Prep-Procedure/Treatment Center Components

P/N	DESCRIPTION	LOCATION	COLOR CABINET	TOP
<b>Imperial Recessed End Treatment Table</b>		<b>Panel 1</b>		
knee space, 4 drawers, 1 door hinged right				
L60HG01B1V0E0A5	Laminated Abutted Top		- - - - †	- - - - †
<b>Imperial 6 Recessed-Middle Prep-Procedure Table</b>		<b>Panel 2</b>		
4 drawers, knee space, 1 door hinged right				
L15AA04V0B1E0A5			- - - - †	
<b>Imperial 6 Recessed End Prep-Procedure Table</b>		<b>Panel 4</b>		
1 door hinged left, 1 door hinged right, knee space				
L10AA03G0A0B1A5			- - - - †	
<b>Imperial Upper Cabinet,</b>		<b>Panel 1</b>		
open				
AAAAAAAADREPBT			- - - - †	
<b>Imperial Full-Height Chase, Cabinet Openings:</b>				
panel one upper				
HFBAAAAAAEPPREP			- - - - †	
<b>Faucet</b>				
024601-E-Z-ZZ-V084-E*				
<b>Drain</b>				
024647-Z-Z-ZZ-ZZZZ-Z*				

\*Faucet and Drain shown, sold separately, see Section 18 for selection.

Regal Prep-Procedure/Treatment Center Components

P/N	DESCRIPTION	LOCATION	COLOR CABINET	TOP
<b>Regal Recessed End Treatment Table</b>		<b>Panel 1</b>		
knee space, 4 drawers, 1 door hinged right				
Y60HA01B1V0E0A5	Stainless Steel Abutted Top			
<b>Regal 6 Recessed-Middle Prep-Procedure Table</b>		<b>Panel 2</b>		
4 drawers, knee space, 1 door hinged right				
Y15AA04V0B1E0A5				
<b>Regal 6 Recessed End Prep-Procedure Table</b>		<b>Panel 4</b>		
1 door hinged left, 1 door hinged right, knee space				
Y10HA01B1V0E0A5				
<b>Regal Upper Cabinet,</b>		<b>Panel 1</b>		
open				
NAAAAAAADREPBT				
<b>Regal Full-Height Chase, Cabinet Openings:</b>				
panel one upper				
UFBAAAAAAEPPREP				
<b>Faucet</b>				
024601-E-Z-ZZ-V084-E*				
<b>Drain</b>				
024647-Z-Z-ZZ-ZZZZ-Z*				

\*Faucet and Drain shown, sold separately, see Section 18 for selection.

**Important:** These customer order requirements, in addition to other customer order requirements, must be satisfied prior to the beginning of manufacturing lead time:  
†Specify 4-digit Color code. See Color Selections, Section A, pages 1 & 2 for Color Codes.



SSCI laminated products are available in SSCI standard laminates, SSCI optional laminates, or Customer selected laminates.

## + Shape, 4-Station Prep-Procedure/Treatment Center

12-ft. 11.25-in. (3.94m) W, 8-ft. 6-in.(2.59m) H, 12-ft. 6-in. (3.81m) D



### Imperial Prep-Procedure/Treatment Center Components

P/N	DESCRIPTION	LOCATION	COLOR CABINET	TOP
<b>Imperial 6 Recessed-End Prep-Procedure Table</b> knee space, 3 drawers, 1 door hinged right, L10AA04B1U0E0A5		<b>Panel 1</b>	- - - - †	
<b>Imperial Recessed End Treatment Table</b> knee space, 3 drawers, 1 door hinged left L60HG01D0U0B1A5	Laminated Abutted Top	<b>Panel 2</b>	- - - - †	- - - - †
<b>Imperial 6 Recessed-End Prep-Procedure Table</b> knee space, 3 drawers, 1 door hinged right, L10AA04B1U0E0A5		<b>Panel 3</b>	- - - - †	
<b>Imperial Recessed End Treatment Table</b> knee space, 3 drawers, 1 door hinged left L60HG01D0U0B1A5	Laminated Abutted Top	<b>Panel 4</b>	- - - - †	- - - - †
<b>Imperial Upper Cabinet,</b> open AAAAAAAADREPBT		<b>Panel 1</b>	- - - - †	
<b>Imperial Upper Cabinet,</b> open AAAAAAAADREPBT		<b>Panel 3</b>	- - - - †	
<b>Imperial Full-Height Chase, Cabinet Openings:</b> panel one upper, panel three upper HFBABAAAAEPPREP			- - - - †	
<b>Faucet</b> 024601-E-Z-ZZ-V084-E*				
<b>Drain</b> 024647-Z-Z-ZZ-ZZZZ-Z*				

\*Faucet and Drain shown, sold separately, see Section 18 for selection.

### Regal Prep-Procedure/Treatment Center Components

P/N	DESCRIPTION	LOCATION	COLOR CABINET	TOP
<b>Regal 6 Recessed-End Prep-Procedure Table</b> knee space, 3 drawers, 1 door hinged right, Y10AA04B1U0E0A5		<b>Panel 1</b>		
<b>Regal Recessed End Treatment Table</b> knee space, 3 drawers, 1 door hinged left Y60HA01D0U0B1A5	Stainless Steel Abutted Top	<b>Panel 2</b>		
<b>Regal 6 Recessed-End Prep-Procedure Table</b> knee space, 3 drawers, 1 door hinged right, Y10AA04B1U0E0A5		<b>Panel 3</b>		
<b>Regal Recessed End Treatment Table</b> knee space, 3 drawers, 1 door hinged left Y60HA01D0U0B1A5	Stainless Steel Abutted Top	<b>Panel 4</b>		
<b>Regal Upper Cabinet,</b> open NAAAAAAAADREPBT		<b>Panel 1</b>		
<b>Regal Upper Cabinet,</b> open NAAAAAAAADREPBT		<b>Panel 3</b>		
<b>Regal Full-Height Chase, Cabinet Openings:</b> panel one upper, panel three upper UFBABAAAAEPPREP				
<b>Faucet</b> 024601-E-Z-ZZ-V084-E*				
<b>Drain</b> 024647-Z-Z-ZZ-ZZZZ-Z*				

\*Faucet and Drain shown, sold separately, see Section 18 for selection.

**Important:** These customer order requirements, in addition to other customer order requirements, must be satisfied prior to the beginning of manufacturing lead time:

†Specify 4-digit Color code. See Color Selections, Section A, pages 1 & 2 for Color Codes.

**For Product Information Call TOLL-FREE 1-800-323-7366 • (847) 537-9320 • Fax (847) 537-9061**

**Hours: 8:30am - 5:00pm CST Monday - Friday**

Visit our website at: [www.suburbansurgical.com](http://www.suburbansurgical.com)



# Design Service For Prep-Procedure/Treatment Center

## THE PERFECT IMPERIAL MODULAR CABINET ARRANGEMENT IS JUST A PHONE CALL AWAY

SSCI's Design Service is offered to customers after discussing and agreeing on a viable project with an SSCI Representative. After a methodical review of the customer's needs for their facility, the SSCI Representative will present the project to our staff of designers to create a set of approval drawings. The drawings ensure that SSCI will

build exactly what the customer has discussed with the SSCI Representative. Once the customer has committed to purchase from SSCI and, if the drawings require revisions, the Final Approval Drawings will be created and presented to the customer for their approval. Other Customer Requirements may be required before manufacturing time can begin.

### CREATING THE PERFECT PREP-PROCEDURE TREATMENT CENTER TAKES JUST 5 EASY STEPS:

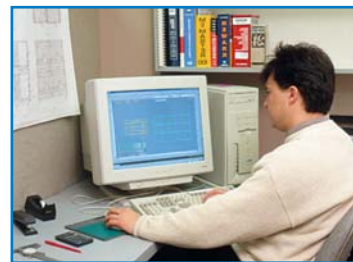
- 1 Measure your space.**  
Obtain overall width, height and depth of the available space in your facility where you plan to place your Prep-Procedure/Treatment Center. Be sure to allow sufficient room at the end of all of the tables in the Center to work or permit gurney or equipment to clear.
- 2 Choose the configuration of your Prep-Procedure/Treatment Center.**  
1-Station, inline configuration,  
2-Station, inline or 'L' configurations,  
3-Station, 'T' configuration,  
4-Station, '+' configuration
- 3 Specify the Tables.**  
Prep-Procedure and Treatment Tables are available in 2 sizes, in a various drawer/door combinations. See Sections 10 and 11 for complete specifications.
- 4 Determine the position of any cabinet cutouts you require.**  
Countertop Chase is either none or one cutout. Full-Height Chase has many combinations, see Full-Height Chase Cutout Locations Chart, see Section 12.
- 5 Choose the cabinets for your Chase.**  
Countertop Chases; specify a Base Cabinet/Countertop and optional Upper Cabinet. Full-Height Chase; specify optional Lower and Upper Cabinets.
- 6 Choose the laminate for your Imperial Prep-Procedure/Treatment Center**  
All SSCI Laminated Products are available in SSCI standard laminates, SSCI optional laminates, or customer-selected laminates. See the Laminate Options pages in the Introductory Section.

Let us help you give your facility the professional appearance you deserve. An SSCI Representative will help you select configuration, tables, chase and sizes, laminate and countertop surfaces of your Prep-Procedure/Treatment Center to meet your unique needs, space requirements and budget.

Let SSCI assist your architect and to help plan the perfect facility.

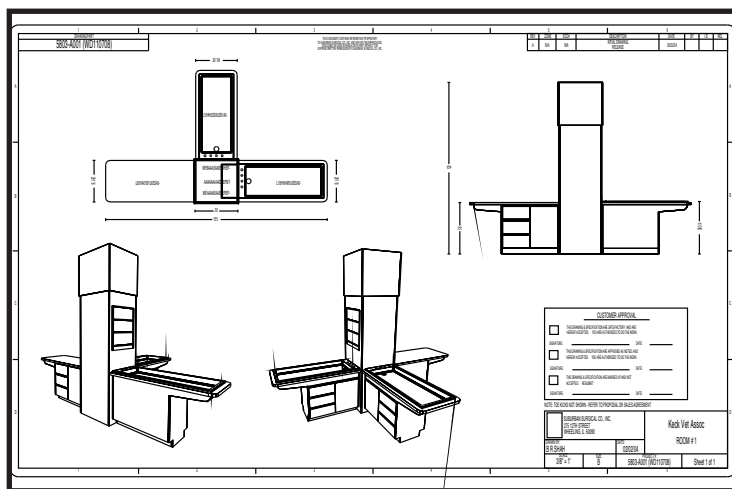
It all starts with a phone call to discuss your requirements. Then we will create a CAD-generated

drawing of your center, complete with faucets and drain selection.



Our team of experienced designers will work with your measurements, work center type, style and budget to create the perfect Prep-Procedure/Treatment Center for your requirements.

### FOR EVERY PREP-PROCEDURE/TREATMENT CENTER PURCHASE SSCI CREATES A DRAWING TO ENSURE CUSTOMER'S SATISFACTION



SSCI creates an Approval Drawing for each Prep-Procedure/Treatment Center ordered. These detailed drawings of your Prep-Procedure/Treatment Center list chase, chases's cabinets and tables. Sizes, quantities and laminate choice\* are also listed and illustrate how the center is to be assembled. If you choose to alter the positions of the tables or cabinets in the center or your choice of laminate\*, do not sign the existing Approval Drawing. Contact your SSCI representative, so that a new Approval Drawing can be created.

All laminated and stainless steel Prep-Procedure/Treatment Center are non-stocked, made specifically per your specifications. Once SSCI has received the signed Approval Drawing the order is non-cancelable.

In addition to other customer order requirements, the Final Approval Drawings must be signed and received by SSCI prior to the beginning of manufacturing lead time.

\*Not applicable for Regal stainless steel products



## Design Service For Prep-Procedure/Treatment Center

**SSCI DESIGNS ALL OF OUR CABINET AND TABLE PRODUCT LINES TO ALLOW INTEGRATION OF THE VARIOUS COMPONENTS FOR A VIRTUALLY ENDLESS NUMBER OF CONFIGURATIONS. OUR DESIGN STAFF CAN ASSIST YOU OR YOUR ARCHITECT.**



**Cabinet Arrangement with  
Recessed End Treatment Table  
Abutted to Front Edge of Countertop**

**Let** our design staff create a Prep-Procedure/Treatment Center integrated with our Modular Cabinetry. Using our standard tables and cabinets from this catalog, we can put together a variety of Prep-Procedure/Treatment/Storage options for your space.

Whether you're looking for a Prep-Procedure/Treatment Center with or without a Countertop Chase, or want to combine an Treatment or Prep-Procedure Table with Custom Cabinetry as shown here, SSCI can help. See Section 19, Undercounter Standard-Height Cabinets for cabinet selection and Sections 10 and 11 for Treatment and Prep-Procedure Tables selection.

Contact your SSCI Representative for to discuss the possibilities.



**Cabinet Arrangement with  
Recessed End Treatment Table  
Abutted to Front Edge of Countertop**



**Cabinet Arrangement with  
Recessed End Prep-Procedure and Treatment Tables  
Abutted to Front Edge of Countertop**